

OPEN LIDS SHALL BE LETTERED "DUMP NO WASTE" WITH A CAST FISH LOGO.

BRICK AND MORTAR AROUND PIPE OPENING (TYPICAL)

PROVIDE NEENAH R-1772 FRAME FOR ALL PUBLIC STRUCTURES USE

PIPE LAID STRAIGHT THRU TOP HALF CUT OUT OR MOULDED INVERT

PLAN

(VILLAGE OF GURNEE LOGO) FOR ALL OTHERS - CONCEALED PICKHOLES, SELF-SEALING GASKET, AND WORD "STORM" CAST IN LID.

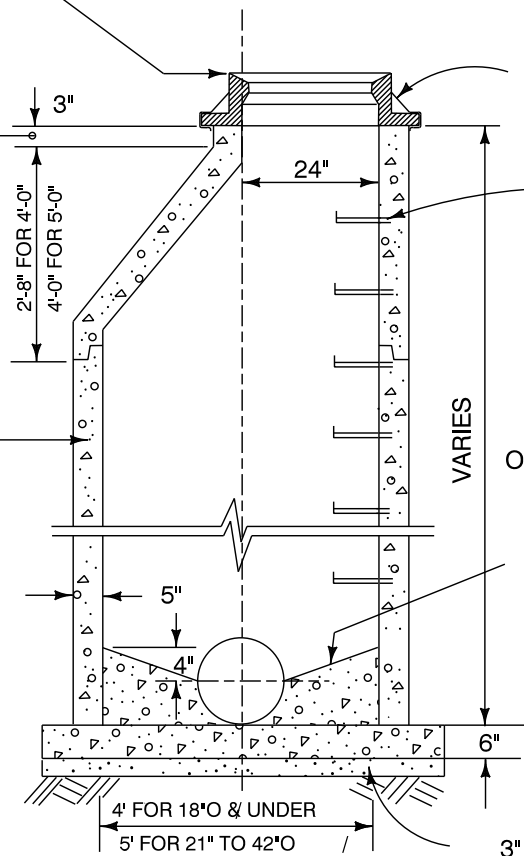
CAST RISER WITH ECCENTRIC CONE SECTION

PRECAST CONCRETE ADJUSTING RINGS AS NECESSARY-HEIGHT NOT TO EXCEED 8"

NEENAH R-1981-I TYPE STEPS, 16" ON CENTER.

PRECAST REINFORCED CONC. RING CONSTRUCTION PER ASTM C-478-64T

ALL MH SECTIONS, ADJUSTING RINGS & FRAMES SHALL BE SET IN FULL BED OF BIT. MASTIC OR PREFORMED BIT. GASKET-MEET OR EXCEED FED. SPEC. SS-S-210A



VARIES

CONCRETE MOULDED INVERT AND FILLET

PRECAST CONC. BASE OR MONOLITHIC CONC. BASE & BOTTOM SECTION

3" GRAVEL, SAND OR CRUSHED STONE BASE FOR LEVEL SURFACE

SECTION

STORM MANHOLE, TYPE A

Issued		
By	Revised	Date
WJH		2-22-93
SD		1-4-06
MJ		6-24-14

VILLAGE OF GURNEE
ENGINEERING DIVISION

Approved by:	
SD	1/4/06
SD	6/24/14